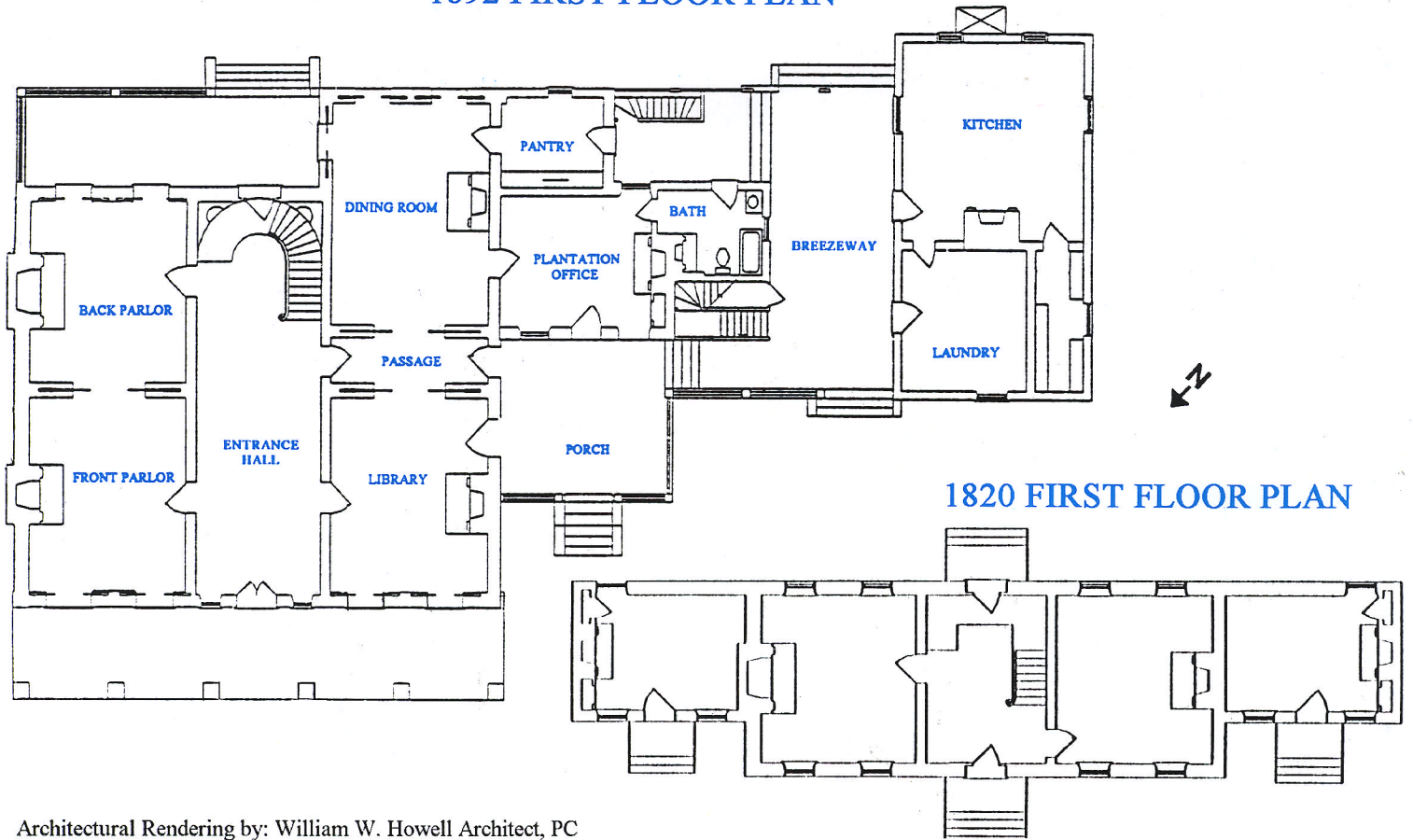


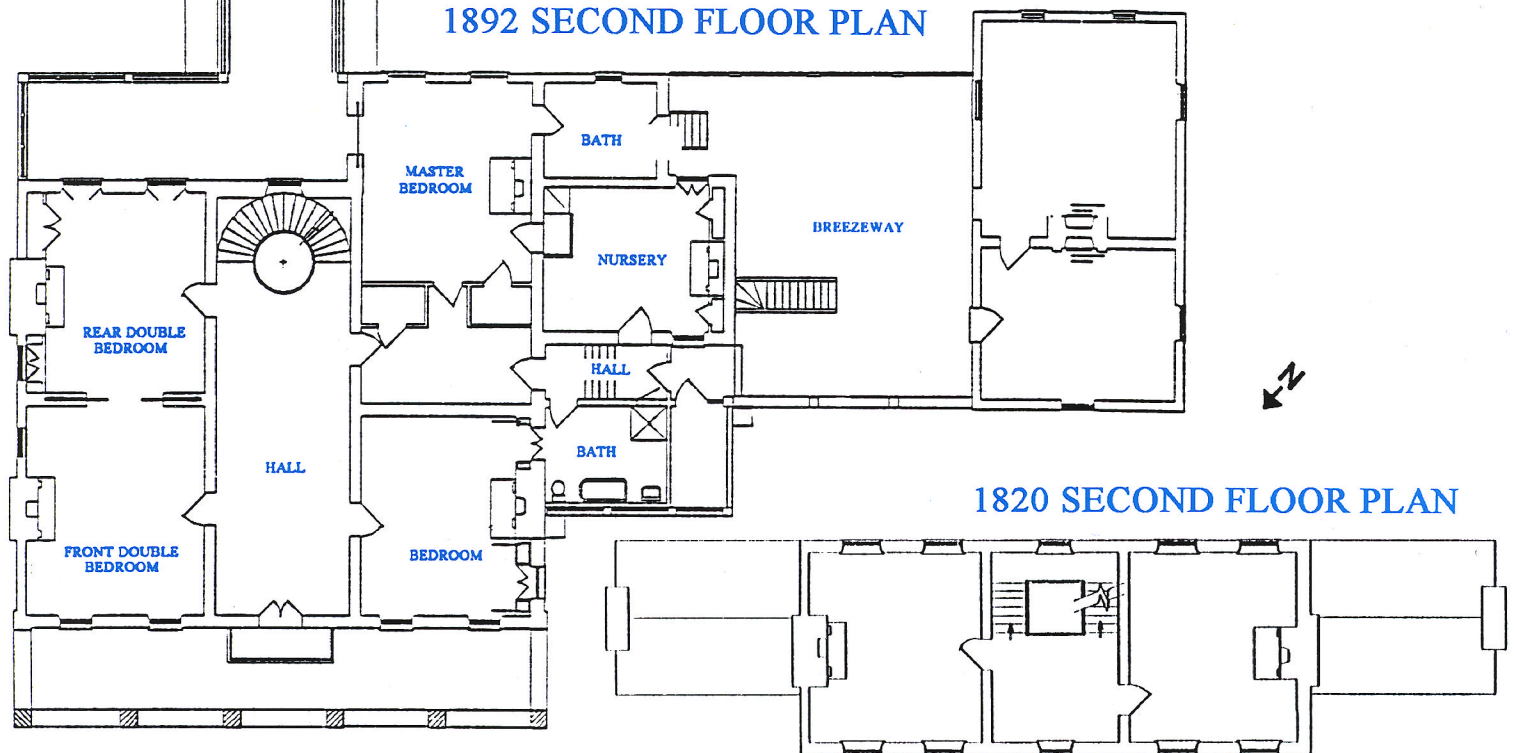
## 1892 FIRST FLOOR PLAN



## 1820 FIRST FLOOR PLAN

The mansion at Belle Meade Plantation was built in the early 1820s. Built in the Federal architectural style, the original house was enlarged in the 1840s. A dramatic change was made in the early 1850s when the house was doubled in size and the architectural style changed to the popular Greek Revival. The house exterior gives the appearance of being a stone building, but it is brick covered with stucco. Minor architectural changes were made in the ensuing years.

## 1892 SECOND FLOOR PLAN



## 1820 SECOND FLOOR PLAN